

RWANDA Dispatch

AN INSIGHT INTO RWANDA

OCT - DEC 2023, ISSUE 78

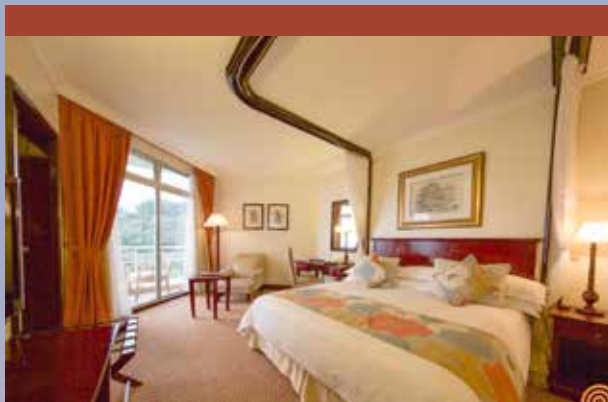
RUBAVU: INTERNATIONAL GATEWAY AND TOURISM HUB



IN 2018, RUBAVU CITY WAS DESIGNATED AS ONE OF RWANDA'S
SIX SECONDARY CITIES TO BECOME POLES OF ECONOMIC
GROWTH AND DEVELOPMENT.



RWANDA TO SET UP WEATHER FORECASTING CENTRE OF EXCELLENCE | PG7
EU, Rwanda launches \$11 million Agricultural Project | PG8



Lake Kivu Serena Hotel is located in the resort Rwandan town of Gisenyi, on the shores of Lake Kivu, the sixth largest lake in Africa. The hotel is ideally situated on a sandy palm lined beach, with the nearby Virunga Volcanoes providing a spectacular backdrop on one side and a panoramic view of the lake on the other.



LAKE KIVU SERENA HOTEL

P.O. BOX 226 Gisenyi, Rwanda

T: +250 788 200430

T: +250 252 541100

F: +250 252 541102

E: kivu@serenahotels.com

KIGALI SERENA HOTEL | www.serenahotels.com



SERENA HOTELS
HOTELS • RESORTS • SAFARI LODGES • CAMPS

Publishing Credits

CONTRIBUTORS

Aimable Twahirwa
Steven Nsamaza
Jejje Muhinde
George Kalisa
Gonzaga Muganwa
Elizabeth Tanganyika
John Mugisha
Viateur Nzeyimana
Steven Tumusiime

DESIGN AND LAYOUT MAKETING MANAGER MAKERTING EXECUTIVES

UserX Designs Ltd | 0784 510 388
Robert Mugabo
Camarade Innocent, Alex Ntaganzwa

TO EXPRESS VIEWS WRITE TO:

Dispatch
AN INSIGHT INTO RWANDA

Rwanda Dispatch, Remera - Gisementi
P.O. Box 453 Kigali Rwanda.

Administration and Editorial: +250 788 306 472

Marketing and Subscription:

+250 785 450 077 / 0781 540 672

Email: rwandadispatch1@gmail.com

Twitter: @rwandadispatch1

www.rwandadispatch.com

DISCLAIMER

The content of RWANDA DISPATCH is protected by copyright law, full details of which are available from the publisher. While great care has been taken in the receipt and handling of material, production and accuracy of content of this magazine, the publisher will not accept any responsibility for any errors, loss or commissions which may occur.

Publisher's Note

Awash the local media, political temperatures in Rwanda are evidently on the positive integers. Rwanda will hold a general Presidential election in 2024 and the ruling Rwanda Patriotic Front (RPF) – Inkotanyi is likely to continue in power beyond 2024, according to political pundits in the region.

President Paul Kagame, the Chairman of the RPF - Inkotanyi may ride on the back of the enormous gains, especially in unity and reconciliation, socio-economic transformation, security, good governance and political stability.

Health, Infrastructure, Education and Energy are some of the key sectors of the country's growing economy that have registered huge achievements during the ending seven-year term of President Kagame.

The Ideal Democratic Party (PDI) September 23 declared that it will support President Paul Kagame's re-election come 2024 Presidential polls.

Mussa Fazil Harerimana, the party's President said his party as always will rally behind Kagame's bid for re-election.

Kagame recently broke news to the French media house, Jeune Africa, about his candidature in the upcoming Presidential election.

Meanwhile, this edition deeply and substantially unveils developmental gains in Rubavu District, where Rubavu Resort City is situated, one of Rwanda's six secondary cities. Besides long strides in tourism, urbanisation and industry, the district has positioned itself as an international gateway with the hospitality subsector flourishing. The district also owes its development to Goma City in the Democratic Republic of Congo its largest market with over a million inhabitants.

In technology, Rwandans are looking forward to the anticipated launch of Rwanda's digital employment platform due December 2023, according to Professor Prince Wasajja Kiwanuka, the INNODIP project coordinator.

Rwanda's target is to create 1.5 million off-farm jobs by 2024 as key strategy to tackle youth unemployment, and at least 214,000 jobs annually. Current statistics at the National Institute of Statistics of Rwanda (NISR) indicate youths unemployment currently stands 17.2%.

Editorial



Table of Contents

Letter to the Editor	5
In 30 Days	6
RwandAir fleet enhanced with Boeing 737	6
Rwanda to set up weather forecasting centre of excellence	7
PRESIDENTIAL RECAP	8
Rubavu: International Gateway and Tourism Hub	12
Hill View Hotel & Apartments in expansion drive	16
Patriotic dreams energised entrepreneur Nyiramongi to build Resorts	20
Ndengeru CBC Polyclinic: Providing Health Care Services with Excellence	24
Kivu Peace View Hotel: more than luxurious retreat	28
Breathtaking scenery inspires establishment of Nirvana Heights Resort	30
Silverback Tea Company empowers communities around tea estates	33
Dian Fossey Nyiramacibiri Hotel Popular for offering Tradition, Nature and Conservation	36
Thirst for Financial Stability defines Etincelles FC	39



said and Quoted



"A more pragmatic approach is for Africa to be a key player in the search for global climate solutions."

PRESIDENT PAUL KAGAME,
PRESIDENT OF THE REPUBLIC OF
RWANDA



"We welcome AU, representing the fastest growing continent, getting a seat in G20. This will give African interests and perspectives voice and visibility in this important body."

H.E WILLIAM RUTO, PRESIDENT
OF THE REPUBLIC OF KENYA



"Investigative journalism fights poor services, corruption, keep leaders in check, help Rwandans to understand the law; it is a voice for human rights and fair justice."

EMMANUEL UGIRASHEBUJE,
MINISTER OF JUSTICE AND
ATTORNEY GENERAL OF
RWANDA



"5G represents more than speed; it's a gateway to a world of endless possibilities,"

MAPULA BODIBE, MTN RWANDA
CEO



On the scene

"This is the second stage of the war whose goals are clear - to destroy Hamas' governing and military capabilities and to bring the hostages home," Israeli Prime Minister Benjamin Netanyahu said as Israel pressed ground campaign against Hamas in 'second stage' of Gaza war.

Since Hamas fighters burst across the barrier fence and killed some 1,400 Israelis on October 7th 2023, Israel has responded with the most intensive air strikes of its 75-year conflict with the Palestinians.

Numbers that speak volumes

1
Kilometer

THE ONE KILOMETER MARK IS THE EXPECTED HEIGHT OF THE WORLD'S TALLEST BUILDING OR STRUCTURE UPON COMPLETION. THE JEDDAH TOWER, A SKYSCRAPER THAT IS UNDER CONSTRUCTION IN JEDDAH, SAUDI ARABIA WILL BE MORE THAN 1,000 METERS TO SURPASS THE CURRENT RECORD HOLDER, BURJ KHALIFA. THE US\$1.2 BILLION BUILDING WILL HAVE 167 HABITABLE FLOORS WITH A TOTAL AREA OF 240,000 SQUARE METERS. IF THE MECHANICAL FLOORS ARE COUNTED, THE TOWER WILL HAVE A TOTAL OF 252 FLOORS.

30.4
Per cent

THIS IS THE PERCENTAGE OF RWANDA'S TOTAL FOREST COVER CURRENTLY REPRESENTING 724,695 HECTARES OF LAND, WHICH 387,425 HECTARES (53.5%) ARE PLANTATIONS, 130,850 HECTARES (18.1%) ARE NATURAL MOUNTAIN RAINFORESTS, 161,843 HECTARES (22.3%) ARE WOODED SAVANNAH AND 43,963 HECTARES (6.1%) ARE SHRUBS.

3.6
million

THIS IS THE NUMBER OF STUDENTS SERVED BY RWANDA'S EDUCATION SYSTEM IN OVER 13,000 INSTITUTIONS. FUNDING AND A DEARTH OF COMPETENT TEACHERS ARE AMONG THE CHALLENGES TO KEEP THE NUMBER IN SCHOOLS, AS IS A HIGH DROPOUT RATE, WITH JUST 71.6% OF LEARNERS PROGRESSING FROM PRIMARY TO LOWER SECONDARY AND 85-4% PROGRESSING FROM LOWER TO UPPER SECONDARY.

771
million Cases

GLOBALLY, AS OF 25 OCTOBER 2023, THERE HAVE BEEN 771,549,718 CONFIRMED CASES OF COVID-19, INCLUDING 6,974,473 DEATHS, REPORTED TO WHO. ACCORDING TO CONFIRMED CASES, EUROPE WAS THE WORST AFFECTED REGION WITH 276,670,008 CASES, WESTERN PACIFIC - 207,400,028; AMERICAS - 193,318,236; SOUTH-EAST ASIA - 61,208,525; EASTERN MEDITERRANEAN - 23,398,767; AND AFRICA WITH 9,553,390 CASES. ON A GOOD NOTE, TOTAL OF 13,533,465,652 VACCINE DOSES HAVE BEEN ADMINISTERED SO FAR.



Dear Editor,

Rwanda Dispatch

Subject: Concern about the resistance and attack of Fall Armyworms in maize plants.

Through the columns of your esteemed newspaper, I would like to present my concern about the resistance and invasion of Fall Armyworms pests attacking maize plants in our locality, Eastern province.

Nowadays, the a destructive pest that primarily targets maize has built resistance to pesticides, and the invasion is likely to rise in most of the fields in this Agriculture Season 2024 A.

At the beginning of the season, we planted hybrid quality maize seedlings, and when

they germinated they're healthy but when we started to weed, the crops were attacked.

The crops are damaged from the inside, resulting in 'shot holes' that become visible as the leaf unfurls, leaves are already damaged.

We have tried to spray using three types of pesticides recommended by authorities but the pests have become resistant to the pesticides.

Seeing the situation in our locality, I request the government to take action.

The Ministry of Agriculture should advise or come up with better alternatives to the resistance of Fall Armyworms to pesticide's so that we can save our crops.

I hope my request can be put into consideration and authorities in charge take action.

I thank you

BUTERA SAMSON



RwandAir fleet enhanced with Boeing 737



RwandAir, the flag carrier of Rwanda has continued to bolster its fleet expansion strategy with the recent acquisition of Boeing 737 aircraft.

This will boost the airline's total fleet count to 14, comprising a combination of three A330s, seven B737s, two CRJ900s, and two Q400s, reinforcing its position as an increasingly formidable force in the African aviation landscape.

Passengers will have the choice to book both Economy and Business classes with the aircraft equipped with 12 plush Business Class seats and 144 Economy Class seats.

"The introduction of our seventh Boeing aircraft is another major milestone for us," Yvonne Makolo, CEO of RwandAir said. "We have been expanding our fleet over the past year and look forward to accelerating this growth to offer customers even better service and connectivity across Africa and beyond."

Last November, RwandAir procured a freighter aircraft, the Boeing 737-800SF for its cargo operations.

From its pivotal hub at Kigali International Airport, RwandAir has gained acclaim for its increasingly flight operations to destinations spanning East, Central, West, and Southern Africa, in addition to the Middle East, Europe, and Asia.

Global tourism summit held in Kigali

The World Travel & Tourism Council (WTTC) held its stellar 23rd Global Summit in Kigali from 1-3 November 2023. The 3-day gathering attracted more than 1,000 participants, including heads of state, global leaders in policy, government, travel, and champions of conservation.

Discussions focused on the future of global travel and tourism. Participants called for collaborative and concerted efforts to promote sustainable travel and the tourism industry in Africa to drive economic growth and create employment opportunities.

President Paul Kagame invited the world to visit Rwanda. "Any African, can get on a plane whenever they wish and they will not pay a thing to enter our country."

Julia Simpson, President and CEO of WTTC, praised the Rwandan government for their hard work in developing the tourism industry, which plays a crucial role in the country's economy and provides jobs for a large portion of the population.



Rwanda to set up weather forecasting centre of excellence



Minister of Environment, Jeanne d'Arc Mujawamariya delivers her remarks during the climate research conference in Kigali on October 27. INTERNET PHOTO

Rwanda in partnership with the World Meteorological Organization (WMO) is set to establish a Center of Excellence in weather, climate modelling, prediction and data sharing.

The discussions between minister of environment, Jeanne d'Arc Mujawamariya and Prof. Celeste Saulo, the incoming Secretary General of WMO were held on the sidelines of the climate research conference on October 27 in Kigali.

This centre in Rwanda could be the effective pathway to early warning

for all and could benefit not only Rwanda but the entire region as well as meteorological science advancement.

Benefits from the anticipated centre of excellence include; Disaster preparedness, Enhanced agricultural productivity, Sustainable water resource management, Public health benefits, Energy Security, Economic growth and diversification, Resilience to climate change and International Collaboration.

Plan to plant 63 million trees underway

Rwanda Forestry Agency (RFA) announced campaign plans to plant over 63 million trees throughout the country in the next eight months, trees will include mixed and perennial, ornamental, fruit and forest trees.

During the October Umuganda day, the Minister of Local Government, Jean Claude Musabyimana launched the 2023/24 Tree Planting Season campaign that is expected to add on the current 30% of Rwanda's forest cover.

The minister said they launched in Gashora, Bugesera district to add on already existing government efforts to reverse the past history of the area and make it more green and climate-change resilient.

Concorde Nsengumuremyi, Director General of RFA underlined the objective as a way to restore enough forests in areas where they have been destroyed. Every household is encouraged to plant at least three trees during this season.

Central Bank on Dollar shortages

Businesses in Rwanda are currently experiencing foreign currency shortages, most notably US dollars.

The dollar being the dominant currency on international market, Rwanda's Central Bank (BNR) acknowledges that there is pressure mounting on foreign exchange market.

BNR Deputy Governor, Soraya M. Hakuziyaremye attributes this shortage to a number of factors including; trade deficit, interest hikes by US Reserve bank, increase in prices of fuel and Covid-19 economic recovery.

"While exports have increased to a turn of 18 per cent since 2015, at the same time imports have also increased, for example raw materials for our industries to produce made in Rwanda goods. In Rwanda the textile industry has to import cotton, so imports have increased much more than exports causing a trade deficit," She said.

"We're spending more dollars, which affects supply and demand. There is an increase in demand for US Dollars in the last few years driven by economic recovery from COVID-19, when the economy opened, people started importing more," the Deputy Governor said.

What is being done: BNR is carrying out a number of measures to mitigate the shortages. These include among others; meeting different stakeholders to try and address issues, supporting commercial banks to ensure that they can satisfy the demand, and avoiding speculation through awareness campaigns.

In addition, research is being carried out on what can be done by the government and different institutions to increase exports, and also to advocate for manufacturing of imported goods and services. Also the country to produce as much as possible in agriculture not to depend on imports of main crops like maize and rice.



Inauguration of IRCAD Africa | Kigali, 7 October 2023



Meeting with President Samia Suluhu Hassan of Tanzania | Kigali, 2 November 2023



Meeting with Sen. Mike Rounds and Congressman Ron Estes | Kigali, 9 October 2023



MTN Rwanda 25th Anniversary celebration | Kigali, 18 October 2023



7th Future Investment Initiative | Riyadh, 24 October 2023



7th Future Investment Initiative | Riyadh, 24 October 2023



Mobile World Congress 2023 | Kigali, 17 October 2023

EU, Rwanda launches \$11 million Agricultural Project



The government of Rwanda (GoR) and the European Union (EU) launched a new Agriculture initiative dubbed 'Kungahara' which is set to combine 14 projects worth over €11 million (approx. Rwf14 billion) designed to tackle food insecurity in the most stricken regions of the country.

The project is expected to promote sustainable food production, inclusive agricultural value chains and targeted interventions in vulnerable communities.

Head of Delegation of the EU, Ambassador Bellen Calvo Uyarra said the project has come to boost

food abundance, prosperity and stabilize food security in Rwanda.

"There will be different kinds of actions involving improvement of the seeds of potatoes and working in the food systems as well as access to a market of farmers," she said adding "Agriculture is the largest flagships in the country in which the EU will be investing its money."

Olivier Kamana, Permanent Secretary of the Ministry of Agriculture said the initiative will complement other agricultural projects that are in the pipeline including Green Initiatives.

War, violence displaces 114 million people worldwide

A UN report released in September, shows the number of people displaced due to war, persecution, violence, and human rights violations worldwide probably exceeded 114 million.

According to the Office of the United Nations High Commissioner for Refugees (UNHCR), the first half of 2023, population displacements were mainly caused by conflicts in Ukraine, Sudan, Burma, and the Democratic Republic of Congo (DRC) but also by the continuing humanitarian crisis in Afghanistan and a combination of drought, flooding, and insecurity in Somalia.

More than half of them have been forced to cross a border, the agency said. And just three nations - Afghanistan, Syria, and Ukraine - are home to almost a third of the world's displaced people.

Low and middle-income countries alone host 75% of refugees and others in need of international protection.

Lionel Messi, Aitana Bonmati crowned 2023 Ballon d'Or winners

Lionel Messi and Aitana Bonmati were crowned the men's and women's 2023 Ballon d'Or winners respectively at a ceremony in Paris on Tuesday, 31 November.

Both players played pivotal roles in their respective countries lifting the World Cup.

Argentina won the competition for a third time and first since 1986 with Messi scoring twice

in the final in December 2022, while Spain's women lifted the trophy after beating England in August 2023.

There were also individual awards for Jude Bellingham, Erling Haaland and Emiliano Martinez.

Team of the year went to two treble winners - Manchester City in the men's category and their female counterparts for Barcelona.



GALAXY KIVU HOTEL

.....Your next home

Amazing location for a stay on Lake Kivu, and just outside of Gisenyi. Most rooms have beautiful lake views from the balcony.



The Congo Nile trail starts near the entrance, plus there's a boat dock at the water front for quick rides.



Phone: 0786 490 000 | galaxykivuhotel@gmail.com

RUBAVU: INTERNATIONAL GATEWAY AND TOURISM HUB

In 2018, Rubavu City was designated as one of Rwanda's six secondary cities to become poles of economic growth and development. The cities are to create opportunities for citizens outside of Kigali and ensure more balanced regional growth and opportunities for increased access to off farm employment for a larger proportion of the population.



Deogratias Nzabonimpa - Acting Mayor of Rubavu District.

THE GOVERNMENT OF RWANDA (GOR) has adopted a deliberate approach towards urbanization. Under the 'Economic Development and Poverty Reduction Strategy' ("EDPRS"), the government set out plans to mitigate growing unplanned urbanization particularly in Kigali City by focusing on creating economic

centres of opportunity across the country.

As a result of the approach, Rubavu has become the 'International Gateway City and Tourism Hub'.

Located on the northern edge of Lake Kivu and borders Goma City, in the eastern region of the

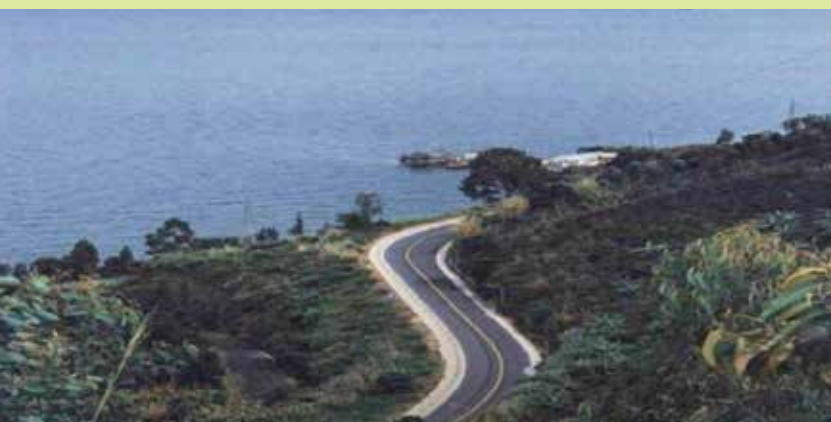
Democratic Republic of Congo (DRC), Rubavu is Rwanda's major tourism destination. The district, also, has the second fastest population growth rate and the highest population density of the six secondary cities, according to the Global Green Growth Institute.

It is the only district, in which Agriculture employs less than 50% of the workforce. Economic activity is gradually deconcentrating away from Kigali towards Rubavu. It is important to note that the Rubavu-Musanze corridor generates the same level of employment as all the other secondary cities combined.

Rubavu boasts of a significant number of large firms; key tourism assets; abundant fertile Agricultural hinterlands; and a crucial cross-border area with a market of over a million inhabitants in Goma.

Despite the impact of the COVID-19 pandemic, the region has seen strategic investments and economic projects to increase its attractiveness.

As of 2023, 53 percent of the surface area of Rubavu District is urban. It is only next to Kigali City. Rubavu has a population of 546,000.



Not long ago, this area was called 'Gisenyi'. Because of the fast rate of urbanisation, the city's geographical spread includes the sectors of Rubavu, Rugerero, Nyamyumba, Gisenyi, Kanama and Nyakiliba – meaning over half of the district is now urban.

The District is currently at the fourth stage of transformation process of all targets that were set to be attained by 2024, according to the Acting Mayor Deogratias Nzabonimpa.

Apart from noticeable infrastructural developments, the social well-being of residents has risen significantly. Stunting in children reduced by 20% a few years ago, to currently 20%, which is below national average.

The Mayor proudly notes: "I can confidently say that President Kagame's urbanization vision to transform Rubavu, is being achieved at a faster rate than envisaged. People in neighbouring districts are moving to Rubavu thereby creating more land for Agriculture, which will ultimately increase food production for the local demand and exports."



Apart from noticeable infrastructural developments, the social well-being of residents has risen significantly. Stunting in children reduced by 20% a few years ago, to currently 20%, which is below national average.

Not long ago, this area was called 'Gisenyi'. Because of the fast rate of urbanisation, the city's geographical spread includes the sectors of Rubavu, Rugerero, Nyamyumba, Gisenyi, Kanama and Nyakiliba – meaning over half of the district is now urban.

QUICK FACTS

KEY FACTS

53% of the surface area of Rubavu District is urban.

Rubavu population 546,000.

23,000 m3: Water supply, 50% used

24-hour supply of electricity

INVESTMENT OPPORTUNITIES

A 5-Star resort and 3-Star resort located at Rubavu District can promote tourism along improving economic activities in the area. Providing tourists with luxury and affordable accommodation can result in a higher number of tourists visiting the border district.

INVESTMENT REQUIRED

5-Star Hotel at Rubavu District – Rwf40 Billion

3-Star Hotel at Rubavu District – Rwf20Billion



Balneotherapy Hub (Amashyuza): Balneotherapy Hub aims, among others to enhance and affirm the touristic image of Gisenyi city, valuing culture and practice of hydrotherapy baths/hot springs (Amashyuza in Kinyarwanda) alongside preserving the natural endowments of the region.



Crops such as beans, maize, Irish potatoes, coffee, tea and pyrethrum thrive on Rubavu soils mostly volcanic soils.

In partnership with the Belgian development agency - ENABEL, construction activities are in advanced stages for interconnecting roads and drainage system of the city.

Rubavu has an uninterrupted supply of clean water as a result of the project of Rehabilitation, Upgrading and Extension of Water Supply Networks in Gisenyi and it's Peri-Urban Areas that include parts of Nyabihu District.

Implemented between 2019-2022, the project constructed 139 Km pipelines, one reservoir of 1,000 m3 capacity, construction of 7 small reservoirs of 230 m3 capacity each, rehabilitation of 11 small reservoirs of 225 m3, 3 pumping stations, construction of 17 public taps, and 6 new water Kiosks, the rehabilitation of 14 public taps and three (3) water kiosks and the protection of four (4) water sources.

The rehabilitation of the network increased the supply capacity of Gihira water treatment plant from 8,000 m3 up to 23,000 m3. Slightly above 50 percent of the water is used today, with the rest being in reserve to cater for the continued expansion of the city.

Methane gas production project, which is in final stages of

“We are contributing a great deal towards the growing national resilience. The methane project has created jobs, helped catalyze expansion of roads and other infrastructures. This electricity won't only just be used locally, but also benefit our neighbours.”

completion will add 56MW into the national grid. The Mayor said of the project: “We are contributing a great deal towards the growing national resilience. The methane project has created jobs, helped catalyze expansion of roads and other infrastructures. This electricity won't only just be used locally, but also benefit our neighbours.”

Electricity supply in Rubavu is 24/7 and the city is wholly lit up at night and its lights shine brightly along all roads, the lakeside and neighborhoods.

Meanwhile, the inauguration of the two-hectare Rubavu port is slated to take place in December 2023. The facility is located in Nyamyumba Sector along Lake Kivu shores. It is anticipated that the port will enhance tourism and facilitate cross-border trade between DRC and Rwanda.

The new Rwf8 billion Rubavu Bus Terminal with a capacity of accommodating 120 Coasters



QUICK FACTS



Tourism: Investors have the opportunity to be part of proposed projects in tourism, which include the Gisenyi Beachside Marina Development, developing the Bigogwe Rock Climbing and Stairway, Nengo Hill Zipline and Gisenyi beach.



Infrastructure and real estate development: The district presents a number of competitive advantages in the Construction sector where to invest include the Rugerero Real Estate development, Gisenyi City Market, Modern Bus Park development, Rubavu Shopping Mall and the Mbugangari Business Complex.



Agriculture: Rubavu District offers various agro-business opportunities for investors - including fish farming, Agro-processing and collective investment opportunities offered by the local arm of the Private Sector Federation (PSF).



or 80 buses was opened last December. Once fully completed early next year, it will be the largest bus park in the country, dotted with a large magnificent shopping complex, warehouse for cross border trade, and other hospitality facilities.

“By comparison, our bus park has few competitors even from Kigali in terms of structural design, capacity and general outlook,” said the Mayor.

Rubavu has another unique characteristic. Nearly all Rwanda’s border regions, all the others are entry points for mostly imports. Rubavu, however, is the first border district to position itself as an export region and route, which translates into increased revenue into the district and country at large.

The Mayor notes: “Rubavu is a gateway for cross border trade and foreigners are taking advantage of the economic opportunities it offers. But, our goal is to have more Rwandans enjoying what the gateway has to offer.”

Lake Kivu offers countless opportunities for would-be investors. Water transport remains a “virgin sector” waiting to be tapped to enjoy the vast market in the North and South Kivu Provinces.

To both local and foreign tourists, Rubavu is the only place along Lake Kivu bank and in Rwanda

with lakeside beaches that meet the qualities of a beach. It hosted the 2019 FIVB Beach Volleyball World Tour. It has become home for IRONMAN 70.3 Rwanda, and the 2024 edition is due August 4.

“Any businessperson looking for opportunities, Rubavu is your place for assured returns,” says the Mayor. “Rubavu district is moving closer to a destination highlight on the global travel calendar.”

You can visit Ibere rya Bigogwe, the greenest hills in Rwanda during a guided tour, spend a day with the cows while there. Join the cattle keepers during milking and drinking time and you’ll not miss the traditional games and songs.

“That experience of international guests milking cows is not something we have had before. It is a new exciting phenomenon. Everyone who visits Ibere rya Bigogwe leaves with a lasting impression,” says the Mayor.



To both local and foreign tourists, Rubavu is the only place along Lake Kivu bank and in Rwanda with lakeside beaches that meet the qualities of a beach. It hosted the 2019 FIVB Beach Volleyball World Tour. It has become home for IRONMAN 70.3 Rwanda, and the 2024 edition is due August 4.

QUICK FACTS



UNIQUE ASPECTS ABOUT RUBAVU

- Gisenyi Public Beach
- Rubona Peninsula
- Congo Nile Trail and Nengo Trail
- BRALIRWA
- Rubavu Night Run
- Panoramic view of Virunga mountains, Nyamuragira volcano, Nyiragongo volcano
- University of Tourism, Technology and Business Studies (UTB), Gisenyi Campus

SECURITY

Rubavu has very negligible levels of crime and is very secure, despite being in a volatile region. The Mayor says they have regular engagement with Goma City, a collaboration that safeguards either side of the border.

“Here in Rubavu we also read about insecurity as a distant issue, which is sometimes blown out of proportion by social media and international players. Otherwise, on the ground, Rubavu is very safe. Economic activities are booming, cross border trade and travel never stopped,”

The Rubavu border is the busiest in the region, and is only compared to the US-Mexico border globally. This is testament to strategic nature of Rubavu.



Hill View Hotel & Apartments in expansion drive

Hill View Hotel and Apartments opened doors in 2014 with the first property in Kiyovu, one of Kigali's oldest and high-end suburb situated in the heart of Africa's smartest city, Kigali. A few years later, it had grown from a little-known hotel to one of the most popular hotspots as its presence spreads to other parts of the country.

Two years after opening, another branch of Hill View Hotel was established on the shores near lake Kivu beach, and in a five-minute drive away from the Rwanda-DRC border post in Rubavu District.

Aside from tapping into hospitality, the management believes that investing in other districts is a strategic

opportunity to position themselves as a major player in the hospitality sector.

"The idea of venturing into Rubavu was motivated by our royal customers," notes Jean Bosco Nkurikiyinka, the Director of Finance at Hill View Hotel, "We had many customers encouraging us to have branches in other regions and Rubavu presented favorable and potential investment opportunities."

He affirms that the district is a good investment destination for hotels because there is a growing clientele of both local and foreign tourists. Hill View Hotel is building the brand in Rwanda with plans to expand the existing facilities.

Nkurikiyinka says that they have made a fortune from the

The idea of venturing into Rubavu was motivated by our royal customers," notes Jean Bosco Nkurikiyinka, the Director of Finance at Hill View Hotel, "We had many customers encouraging us to have branches in other regions and Rubavu presented favorable and potential investment opportunities.

hotel business. They have two branches - Hill View Hotel in Kigali and Rubavu. A large proportion of the customers are Rwandans, but international guests have been gradually increasing and all appreciate the services at this hotel.

International guests enjoy free transport from and to the Airport, courtesy of the hotel.

Hill View Hotel in Kigali boasts of 46 rooms and apartments featuring Single, Silver, Twin, Gold, Family Rooms and Executive Suites.

Guests are also able to enjoy an array of services like the business center, coffee corner, bar/ lounge, free parking, children's activities, fitness center, gym, and workout room.

From our luxe accommodations to our exceptional service,



we strive to provide you with everything you need for a comfortable and enjoyable stay, observes Nkurikiyinka.

In Rubavu, Hill View Hotel Lake Kivu is considered among the best hotels boasting 49 rooms, suites and apartments. The rooms are equipped with air conditioning, a desk, flat-screen TV, private bathroom, bed linen, towels and a terrace with a garden view.

Every room at this hotel have a balcony with a wonderful view overlooking Lake Kivu.

The hotel also features leisure facilities, a beautiful swimming pool as its centerpiece, wellness spa and conference facilities with capacity to host at least 300 people.

Management says plans are underway to add facilities that are still lacking like hair saloon, hairdressing, manicure and pedicure services.

The restaurant here serves local and international dishes at affordable rates, while guests



**Dukuzumuremyi Benjamin, Manager
Lake Kivu Hill View Hotel**

are treated to a reasonable selection at breakfast every morning.

Benjamin Dukuzumuremyi, Manager of Hill View Hotel Lake Kivu observes that they source most of their food supplies locally from farmers in Rubavu to create a social-economic impact on the community.

The hotel offers employment opportunities to the local community as well where at least 80 per cent of the employees come from Rubavu.

The work force at the hotel is



regarded the biggest asset, Hill View Hotel has enrolled all employees into the pension scheme Ejo Heza, where it pays 100%.

To recognize the contributions of building a skilled workforce for rapid economic transformation through training, Hill View Hotel was awarded by Rwanda TVET Board.



There are other direct contributions made by the hotel such as supporting local entities at the cell or sector level, and the community is given support by paying Community Basic Health Insurance (Mutuelle de Sante) for at least 100 residents.

Nkurikiyinka says that they work closely with Rubavu district authorities to support government policies, this also helps the hotel to play their part in developmental activities as stakeholders in uplifting welfare of communities.

The hotel also features leisure facilities, a beautiful swimming pool as its centerpiece, wellness spa and conference facilities with capacity to host at least 300 people.

Hill View Hotel Amenities

- Free Wi-Fi
- Free breakfast
- On-site restaurant
- Airport pick-up/drop-off
- Telephone
- Satellite TV
- Kitchen
- Travel around Kigali/Lake Kivu
- Conference rooms
- 24/7 room service
- Work desk
- Air conditioner/fan
- Balcony
- Parking
- Laundry
- 24 hour reception





LAKE KIVU



Every stay will give you a reason to smile



Lake Kivu

Reception: +(250)780 780 345 858 / 788 947 255

Office: +(250)785 856 255 | Gisenyi , Rubavu

Email: bookinghillviewhotelkivu@gmail.com

[@hillviewhotel.kivu](https://www.instagram.com/hillviewhotel.kivu) [@Hillview_Hotels](https://www.facebook.com/Hillview_Hotels)

info@hillviewhotelkivu.com



Every
stay will
give you a
reason to
smile



KIGALI

Reception: + (250) 783 462 500 / 789 124 574
Office: + (250) 782 663 409 | KN 25 St, Kiyovu
Email: hillviewrwanda@gmail.com
info@hillviewhotelrwanda.com

[@hillviewhotel.kigali](https://www.instagram.com/hillviewhotel.kigali) [@Hillview_Hotels](https://www.facebook.com/Hillview_Hotels)

PATRIOTIC DREAMS ENERGISED ENTREPRENEUR NYIRAMONGI TO BUILD RESORTS

Leaving a well-to-do life in Europe, Odette Nyiramongi returned to her roots to help rebuild her country. In 2002, she set-off to Gisenyi and started yet another new life from scratch. She began a small business of roasting fish at Brasserie, an area named after the beer factory near Lake Kivu.

Odette Nyiramongi was born in Rwanda but fled her homeland because of the war, she returned home after liberation of the country only to discover that her family's properties had been destroyed during the 1994 Genocide against the Tutsi.

After returning from Belgium in the late 1990s, Nyiramongi was challenged to make a bold move to return home in Rubavu District, a place she so much loved and wanted to help develop.

“Getting start-up capital was one of the most difficult things, it was hard. Initially, I stayed in an abandoned house of a family that had fled the genocide. It had no windows and front door, I had to borrow the door from a neighbor”

“I loved my country and wanted to do anything to rebuild it. At first, I didn't know what to do because of lack of resources but providing services however small was a start and roasting fish became my start,” she says.

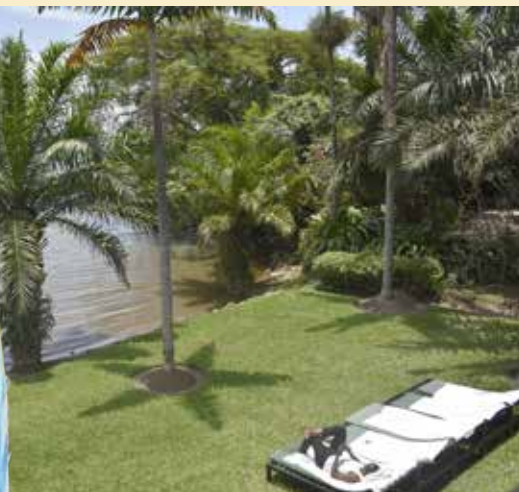
“Getting start-up capital was one of the most difficult things, it was hard. Initially, I stayed in an abandoned house of a family that had fled the genocide. It had no windows and front door, I had to borrow the door from a neighbor” Nyiramongi explains how dire the situation was at the time.

With the small startup, she targeted customers such as truck drivers from Bralirwa, the brewery company. In order to expand her small business, she combined the fish trade with selling different kind of drinks.

As the fish-roasting business thrived, Nyiramongi spotted the need for board or lodging services and started with a single room. This business idea laid the foundation for the Paradis Resort Brand.

“I started by establishing one room to rent out, using savings from my business made it possible with plans to expand into a hotel,” She points out. “If you work hard, passionate about something and kind, amazing things will happen.”

The journey was not without challenges, but her relentless work ethic and passion were the driving force behind her success to build two beautiful hospitality establishments; Paradis Malahide and Paradis Kivu.



Odette Nyiramongi



BUSINESS

The set-up includes single, double, triple and twin comfortable cottages, each built using local wood and volcanic rock to blend seamlessly into the natural beauty of the area, with views of mountains or lake Kivu.

The resort also has a bar, restaurant, and offers guests with massage services as well as kayaking and fishing on Lake Kivu.

The founder of Paradis Resort Brand, believes the traditional decor in both hotels reflect the diverse Rwandan cultural heritage and beauty.

Guests will find a 24-hour front desk and gift shops at both resorts, they offer free evening entertainment while staff provide top-notch services to make you want to stay at either hotel.

Nyiramongi thinks highly of quality above all. She personally trains the youth to ensure they provide exceptional services and says that the most successful staff must have a positive attitude when serving customers.

Wanting to taste the best of contemporary Africa? The Paradis Resort Brand puts natural beauty of Lake Kivu at your feet.

PARADIS MALAHIDE GISENYI

Ideally situated in an area of unparalleled natural splendor, Paradis Malahide Gisenyi is a cozy-luxury hotel of ten comfortable bungalows on the beach that lets your worries melt away.

Set at the water edge of Lake Kivu, the affordable resort is characterized by its African architecture style. The contemporary interior designs are deeply ingrained in Rwanda's cultural flair. They are made from concrete, timber, reeds and papyrus.

A sun terrace and free WiFi are among the resort's amenities. Paradis Malahide offers pet-

friendly accommodations and free private parking.

For couples on a honeymoon, you can enjoy buffet or à la carte meals at an on-site restaurant or in the beautiful gardens. Special diet menus are available on request. Guests can also be treated to a wonderful fire pit at night.

PARADIS KIVU

Located on Nyamyumba road on the shores of Lake Kivu in Rubavu, the sister resort Paradis Kivu is a perfect getaway, it has spherical, thatched structures and lush green that evoke the thousands of hills that dot the Rwandan landscape. It is reminiscent of the verdant greens of the country's rainforest.

● ● ● ● ● ● ● ●
As the fish-roasting business thrived, Nyiramongi spotted the need for board or lodging services and started with a single room. This business idea laid the foundation for the Paradis Resort Brand.
● ● ● ● ● ● ● ●



PARADIS MALAHIDE GISENYI

**IDEALLY SITUATED
IN AN AREA OF
UNPARALLELED
NATURAL
SPLENDOR, A COZY-
LUXURY HOTEL OF TEN
COMFORTABLE
BUNGALOWS ON THE
BEACH THAT LETS
YOUR WORRIES
MELT AWAY.**



**RELAXING LAKE AND ROLLING GREEN HILLS
PERFECT FOR RELAXING
UNPARALLELED IMMERSION**

B.P 535 RUBONA RUBAVU, GISENYI, RWANDA

TEL: +250 788 648 650 | +250 788 756 204

INFO@PARADISEMALAHIDE.COM | WWW.PARADISEMALAHIDE.COM

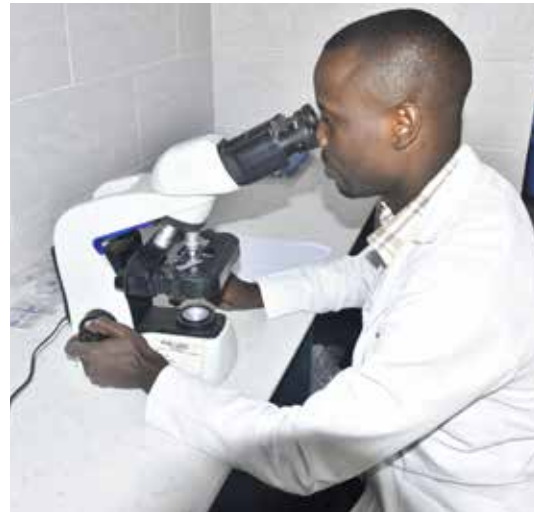


NEW LUXURY RESORT PARADISE KIVU

**DISCOVER ALL NEW PARADISE KIVU. SISTER OF
PARADISE MALAHIDE, THIS NEW LUXURY RESORT
HOTEL IS LOCATED IN UNTOUCHED NATURE.**

ADDRESS: ROAD 012 NYAMYUMBA, GISENYI, RUBAVU, RWANDA
PHONE 1: +250 780 522 890 | PHONE 2: +250 780 508 428 | WHATSAPP: +250 780 522 890
E-MAIL: INFO@PARADISEKIVU.COM

Ndenger CBC Polyclinic: Providing Health Care Services with Excellence



Ndenger CBC Polyclinic is a healthcare facility in Gisenyi, Rubavu District. It was established as part of the outreach health clinics to provide frontline healthcare to patients in the area.

Built in 2010 by Ndenger Foundation, a Church of Nazarene affiliated Non-Governmental Organisation, the polyclinic is renowned for its top-of-the-line facilities, skilled practitioners, dedicated and qualified staff.

Rev. Simon Pierre Rwaramba, the Chief Executive Officer says that the polyclinic was built to serve the residents of the area that was remote at the time.

"Ndenger Foundation is based on three core values; community

development, education and health. The polyclinic aligns with our health core values to serve and create an impact in this area," he explains.

Thirteen years later, the polyclinic has earned the reputation for providing of comprehensive healthcare services and become the first private facility to offer gynecology and obstetric services, as well as the cervical cancer screening and treatment in Rubavu district.



A major part of its patient population is from Rubavu and neighboring regions like Karongi, Musanze, Nyabihu and Rutsiro among other Districts. Others come as far as from Kigali and the Eastern Democratic Republic of Congo (DRC).



Rev. Rwaramba says that the polyclinic is widely appreciated for its commitment to providing the best patient care.





The major part of its patient population is from Rubavu and neighbouring districts like Karongi, Musanze, Nyabihu and Rutsiro among other. Others come as far as Kigali and the Eastern Democratic Republic of Congo (DRC).

With a dedicated team of experienced specialists aided by modern diagnostic equipment, this polyclinic has ensured prompt diagnosis and dependable maternity services.

More than 100 babies are born from this clinic every month and the facility has cultivated a reputation as the largest facility going by bed count and scale of maternity care operations in Rubavu District.

The role in development played by Ndengera is not only to provide healthcare but also community development and education. The

polyclinic alone employs more than 87 people including doctors in various specialties, general practitioners, obstetricians, nurses, and technicians among others.

The health facility has ambulances and other specialized vehicles that offer fast, and free evacuation pickups and drops for pregnant women at the offset of labour.



More than 100 babies are born from this clinic every month and the facility has cultivated a reputation as the largest facility going by bed count and scale of maternity care operations in Rubavu District.

HEALTH

"Most women in rural communities give birth at home either because they lack transport or they have to travel a long distance to reach a health facility. So, we offer them free means of transport to come and give birth at the polyclinic," notes Rev. Rwaramba.

"For us, partnership is the key to success. We work with partners like the district authorities, other government hospitals and international partners," he emphasized.

Ndenger CBC Polyclinic import medical facilities and equipment worth Rwf300 million every year. Some they grant to public health facilities through the district.

During Covid-19 pandemic, the polyclinic donated beds to the medical facilities in the Western Province and provided medical supplies worth Rwf 80 million to Gisenyi District Hospital to help the COVID-19 patients.

To improve the services, the management reaches out to patients by means of tele-health to seek feedback on the quality of health services offered by the polyclinic.

The system avoids situations of long patients' queues and long waiting, creates a more flexible, efficient and optimal working schedule that is transparent, and hence improving patient satisfaction.

In a bid to expand into a fully-



During Covid-19 pandemic, the polyclinic donated beds to the medical facilities in the Western Province and provided medical supplies worth Rwf 80 million to Gisenyi District Hospital to help the COVID-19 patients.



fledged hospital hopefully this year, the polyclinic is building a 87-inpatient-bed hospital on vacant land which is expected to open soon.

However, one of the biggest challenges is limited medical personnel in the country and a few who are available prefer to stay and work in cities like Kigali.





KIVU PEACE VIEW HOTEL

The Hotel is located at the entrance to Gisenyi City on mount Rubavu overlooking Lake Kivu and 10 minute drive from the main border with Goma (DRC) and Rwanda. Our staff are always ready to provide a range of friendly and individualized services to meet your needs.

Guests Experience the Vibrant Rwandan Culture And Rubavu City Ambiance.



Our hotel provides FREE Wi-Fi access for residents so you can always keep in touch with remote businesses while you enjoy your stay with us.



Phone+250 788 316 330 | Email: kivupeaceviewhotel@gmail.com
www.kivupeaceviewhotel.com



KIVU PEACE VIEW HOTEL: MORE THAN LUXURIOUS RETREAT

If you love the serenity and fun of lake view holiday with a touch of class and the best retreats in the Western Province of Rwanda, Kivu Peace View Hotel has it all.

Church changed name from Peace Land to Kivu Peace View Hotel in 2017 when it had gained ownership of the most visited hospitality facility in Rubavu today.

Father Jean Marie Vianney Hodali, the Managing Director of this hotel observes the hotel started by attracting local and far away guests from neighboring DRC as well as tourists visiting popular destinations in the Western and Northern provinces like spectacular tourist attractions such as Giswati forest and Volcanoes National Park.

"When tourists want to travel to a place the first thing on their fact-finding list is the availability of modern and palatable accommodation facilities. When they're told about Kivu Peace View Hotel in Rubavu, none will lurch which makes the town popular and magnetic," Fr. Hodali points out.

The facility offers a range of excellent services including superb rooms, bar and restaurant, entertainment and conference services.

The stunning collection of rooms and suites capture grandeur and mood, each of the 54 spacious rooms and suites offers

Located near the entrance to Rubavu City (formerly Gisenyi) in Rubavu District and 10 minute drive from the border that separates the Democratic Republic of Congo (DRC) and Rwanda, the hotel is not just a weekend destination for Rwandans seeking a nice place for relaxation with spectacular views of Lake Kivu, but also international visitors who flock to this region for tourism.

Inspired by its location and eco-friendly environment, surrounded by hills, forests, and a lake, which is an oasis of cool and green, Nyundo Diocese of the Roman Catholic

Father Jean Marie Vianney Hodali, the MD, Kivu Peace View Hotel





Excellent customer services and varying menu make Kivu Peace View Hotel exceptional. The menu is an excellent selection of Rwandan, African and international dishes prepared by experienced and professional chefs.

Fresh served Rwanda coffee will linger in your memory long after you have left.

As an important hospitality establishment in Rubavu District, the hotel boasts of a unique architectural design that presents Rubavu mountain more beautiful which translates in a large number of tourists.

This investment has also contributed to the development of the district and the area as a secondary city in different ways. Apart from contributing to the district's revenue through paying taxes, the hotel has created dozens of jobs for the staff, suppliers and transporters.

The Managing Director of the hotel adds that they support vulnerable patients who visit the nearby Rubavu hospital and pay Community Based Health Insurance (Mutuelle de santé) to hundreds of poor families in neighboring communities.

The milestones recorded so far by Kivu Peace View Hotel are enough. The management announced a plan to expand it to a 5-Star hotel in the near future and they have set apart ample land in the vicinity to undertake the venture.

mesmerizing comfort. In addition to single, double and family-twin rooms, the hotel offers balcony while guests in need of exclusive privacy, can opt for VIP rooms.

Apart from a fine interior décor, the hotel boasts of panoramic views of Lake Kivu and the city of Goma just situated on the other side of the lake with the best sights at the balcony or restaurant.

Here, guests can freely enjoy extra amenities like 24-hour services, satellite TV stations in rooms, lobby or bar and you can choose to stay connected to the world with free and fast Wi-Fi access.

CONFERENCE FACILITIES

Kivu Peace View Hotel offers sensational places for hybrid, live meetings, conferences, and get together meetings and/or parties. The hotel's six conference rooms are located at the premises of the facility and off-site.

Fr. Hodali explains that they are able to host multiple conferences at



once. The different meeting rooms each with a capacity to host 150 people.





Breathtaking scenery inspires establishment of Nirvana Heights Resort

Pestered with the urge to contribute to the development of her motherland Rwanda, Mukamitali's initial idea to build a vacation home turned into a hospitality facility to welcome people to this beautiful region and create jobs for Rwandans.

The spectacular sights of the attractions endowed in this area including Lake Kivu and the rolling hills on which green vegetation thrives served as great motivation for Adrienne Mukamitali to conceive the idea of founding Nirvana Heights Resort & Spa.

"One day when I was standing in the farm at the very place where this hotel is sitting, I experienced exciting views made of striking sceneries and was mesmerized by the beauty of the sights and



hatched the idea of establishing a vacation home, which later evolved into a hospitality facility we know today as Nirvana Heights Resort & Spa.

Pestered with the urge to contribute to the development of her motherland Rwanda, Mukamitali's initial idea to build a vacation home turned into a hospitality facility to welcome people to this beautiful region and create jobs for Rwandans.

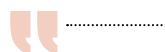
Construction of Nirvana Heights Resort was completed two years after the birth of the idea. Its sole aim is to provide hospitality services to both local and foreign tourists.

The few years of its existence, the resort has been recognized for offering an intensely glamorous and enchanting experience.

The property offers the ultimate sanctuary and tranquil



environment for anyone looking forward to resting and unplugging from all the hustle and bustle.



Nirvana Heights Resort which aims to acquiring a 4-Star Hotel status with at least 30 self-contained rooms, high rise swimming pool, spar and modern conference facilities that can host up to 200 guests.



automatically rejuvenated my mind, then an idea was born," revealed Mukamitali during a recent exclusive interview with Rwanda Dispatch.

The splendid views refreshed her mind and body when harvesting animal feeds that she had grown on her farm.

She had bought some land in Rubavu near Lake Kivu to grow pastures for her cattle. At the time, Mukamitali practiced dairy farming in the periphery of Rubavu Resort City. Her turning point came in 2014 when she



Girls and women from the neighboring communities have had a chance to train and work at Nirvana Heights Resort & SPA.

The Founder of Nirvana Heights Resort & SPA observes that they aim at continuing to support the local community, development of Rubavu and the country in general.

She revealed that there are plans for expansion and bring the resorts to other parts of the country. She is building a camping site at one of the small islands in Lake Kivu, a health retreat at a peninsular and plans for Nirvana Club House, a hotel in Kigali.

Gisenyi, Rubavu

Rwanda | Near Bralirwa

+250 788 306 585

nirvanaheightshotel@gmail.com

Nirvana Heights Resort which aims to acquiring a 4-Star Hotel status with at least 30 self-contained rooms, high rise swimming pool, spar and modern conference facilities that can host up to 200 guests.

Rwandan traditions, history and modern beauty are intertwined at this hotel where guests get to enjoy cottages set in traditional artifacts depicting how ancient Rwandan chiefs or kings lived.

The swimming pool raised above and overlooking Lake Kivu lives much admiration of its beauty as much as the relaxation it offers.

The farmer turned hotelier maintained a classic continental and international menu with most of the supplies from her own gardens that are planted without chemical or manufactured Agricultural inputs and freshly supplied on order.

These practices as much as they benefit the hotel, the local residents living near the hotel are employed which is promoting the community.

Mukamitali who was widowed

at a young age during the 1994 Genocide against the Tutsi is passionate about caring for orphans, promoting girls and women's rights as well as welfare.



Nirvana Heights Resort which aims to acquiring a 4-Star Hotel status with at least 30 self-contained rooms, high rise swimming pool, spar and modern conference facilities that can host up to 200 guests.





President Paul Kagame alongside senior government officials and heads of security agencies visit areas of Pfunda Tea Factory that were ravaged by landslides in Rubavu District.

SILVERBACK TEA COMPANY'S PFUNDA TEA COMPANY EMPOWERS COMMUNITIES AROUND TEA ESTATES



Tea is one of the most popular beverages in the world and its rich history and cultural significance make it a drink that is loved by millions of people.

Globally, Rwanda is known for the best tea, whose high quality is linked to the favourable geographical conditions including high altitudes, volcanic fertile soils, abundant rainfall as well as temperate climate. Its strength, bright colour, flavour and consistency in processing has gained Rwanda tea enormous global acceptability.

To maintain this premium quality, Silverback Tea Company operates three strategic tea estates at Pfunda in Rubavu District with rich volcanic soils, Rugabano in Karongi District and Gisovu Estates along the borders of Nyungwe natural forest.

The tea that the estates



Nzeki S. Munyao,
the C.E.O of
Silverback Tea
Company



Veerendra Kumar
Rawat · General
Manager at Pfunda
Tea Company

produce are some of the finest in the world traced to the uncompromised standards observed throughout the value chain.

According to Nzeki S. Munyao, the C.E.O of Silverback Tea Company, tea is one of Rwanda's main cash crops, and among the leading foreign exchange earner

Vision: To be the most trusted producer and supplier of premium african teas globally.

Mission: To share the joy of the finest teas from Rwanda with the world while uplifting our employees and smallholder farmers' welfare, safeguarding the environment, and ensuring the highest quality standards.



to the country and reliable source of revenue domestically.

Munyao elaborates that favorable conditions make Rwanda tea one of the finest worldwide. He stresses that tea growers and local communities, have played a key role in ensuring the company and country at large produces high quality tea, and the tea company attaches great recognition to the community as partners, to which the company has put first.

The company's corporate measure prioritizes citizen's interests rather than the management of the profits. Silverback Tea Company has contributed towards leveraging the welfare of the residents surrounding its tea estates.

Here, smallholder tea growers are provided with assistance including credit, logistics and agronomy services and buys from them directly, this approach has significantly raised their incomes.

"As a company embedded deep in the community, the senior corporate leaders actually come from the remote cooperative unions and we make sure we are part and parcel of citizen's development," Munyao notes.

The company directly employs more than 3,000 residents and 10,000 people indirectly from its different properties.

PFUNDA TEA FACTORY IN RUBAVU

Pfunda dates back to 1964 when the first tea plantations were planted on 200 hectares in Nyamyumba lowlands and tea leaves would be transported

Bright Teas From A Thousand Hills People, Environment and Quality

Pfunda dates back to 1964 when the first tea plantations were planted on 200 hectares in Nyamyumba lowlands and tea leaves would be transported over 200km to Mulindi for processing. A small factory of 350 tonnes annual production was established in mid-1970s to serve the growing produce.

over 200km to Mulindi for processing. A small factory of 350 tonnes annual production was established in mid-1970s to serve the growing produce.

Côme Degaule Nyirurugo, the head of production at Pfunda Tea Factory explains that tea growing in north-western Rwanda was started with few unwilling farmers but has had significant impact to the surrounding communities.

The expansion of the tea production at Pfunda has been gradual and consistent, today the factory has capacity to produce 4,000 tones per annum. When Silverback bought the factory 2017, it served about 900 farmers but they have grown to more than 2,200 farmers and tea plantations increased from 737 hectares to 1,565 hectares.

This increase has had far-reaching impact on the neighboring communities, farmers own the majority of the plantations at 75% and have 10% shares in the factory.

Silverback Tea Company supports smallholder farmers with an array of services to maximise quality and yield, including supply of quality planting materials, as well as supporting smallholder greenfield expansion.

Mr. Pacifique, chairman of tea growers cooperative is happy for the good relationship he has with the General Manager Mr. Kumar and the CEO Mr. Nzeki S. Munyao.

Nyirurugo notes that the factory provides farmers with agricultural inputs like seeds, fertilizers and all requirements





MANUFACTURING

Export Development Board (NAEB), who remain their main partners in making tea a strong commodity.

He revealed that in Africa, Rwanda has been the best in terms of tea out-performing its neighbors and Pfunda Tea Factory is among the top taxpayers into the country.

For a sustainable tea sector, Silverback secures and supports farmers to obtain certification for different standards. In the sector, certification is normally a major requirement as a marketing tool to penetrate different markets with premium prices and the company ensures that always there is an updated accreditation from an internationally recognized institution.

The company aspires to further boost this cash crop but sometimes it is faced with challenges like the effects of climate change.

Recently, when River Sebeya in Rubavu overflowed its banks and flooded the area, some of the tea plantations were destroyed. In response, the tea factory worked with members of the community to make improvements in which residents would also benefit.

In a nutshell, Silverback Tea Company operate on the guiding principle that good tea depends on its source - the terroir, and the people producing the tea itself.

The team at Pfunda Tea Company was grateful and greatly honoured when His Excellency, President Paul Kagame visited them following the floods in May 2023.

for nursery beds. Farmers can be given interest free loans to purchase fertilizers.

Tea growers have access to all basic needs and their children are able to go to school easily as a result of tea proceeds. Management at the factory says, at least 50 per cent of the earnings from tea goes back to the farmers and benefits the community in general.

"We interact with the community on a daily basis and make sure that creating employment opportunities comes first," says the C.E.O of Silverback Tea Company.

The company supports Early Childhood Development programs through which women are able to take their toddlers. Parents do not have to worry about matters regarding food, women are also able to get support in their activities.

To support local development in areas the company operates from, it has been instrumental in supporting some rehabilitation of rural roads, district development plans through JADF, genocide commemoration activities and other local community needs.

Pfunda Tea Factory pays Community Based Health Insurance for at least 4,000 vulnerable residents in Rubavu and Rutsiro districts where it operates.

There have been some sporting programs groomed by the company in the area such as cricket, basketball and football. Pfunda is also credited to have established Etincelles FC, the official football club of Rubavu which is loved by many of the residents in the district.

Information exchange and training platforms are also provided to farmers, in which 70% of farming technical know-how comes from cooperative out-growers themselves. In addition to that, the sharing of knowledge is important.

Unlike the old days, the company shares the finished products after production to farmers for their own consumption, this is done through direct distribution at factory price.

Munyao says working closely with the communities has been a fulfilling experience and recognizes the role of local authorities and institutions like the National Agricultural

To support local development in areas the company operates from, it has been instrumental in supporting some rehabilitation of rural roads, district development plans through JADF, genocide commemoration activities and other local community needs.





DIAN FOSSEY NYIRAMACIBIRI HOTEL POPULAR FOR OFFERING TRADITION, NATURE AND CONSERVATION

The 2-Star hotel is located in close proximity to the main border between the Democratic Republic of Congo (DRC) and Rwanda. Precisely, it is a five-minute walk from the border post. Dian Fossey Nyiramacibiri Hotel's beauty and attractiveness is upgraded by the natural environment and the beauty of Rubavu Resort City in the Western Province.

Located within the vicinity of the shores of Lake Kivu, guests can easily access the famous beaches in Rubavu and other popular landmarks.

Bertin Hamudara, the Founder and Managing Director notes that he established the hotel because Rubavu is endowed with a variety of tourist attractions and thus presents great opportunities in the tourism sector. He emphasizes that there



Bertin Hamudara, the Founder and Managing Director

was a lingering gap in hotel services by the time.

Hamudara, an experienced hotelier saw the need and sought to contribute his years of experience bringing uniqueness to the hospitality sector. The hotel's focus is to blend tradition, nature and conservation in the hotel services.

With barely no fixed structures and a high demand of conference services by NGO's in early 2000s set Hamudara on a crush plan to offer services from tents as shelter. The start was an instant success that put him on the road to building his own hotel.

Upon returning to his motherland in 1994, Hamudara operated a small guesthouse with a bar in Gisenyi town but later got a job with UNHCR. But the demand for hoteliers by then compelled him to return after four years to become



With barely no fixed structures and a high demand of conference services by NGO's in early 2000s set Hamudara on a crush plan to offer services from tents as shelter.





exceptional comfort and convenience with their minibar, air conditioning, terrace views for all rooms as well as free WiFi connection.

The venue offers not only individual climate control, safe deposit box and a couch, but also a dishwasher, a refrigerator and a toaster in the rooms. Guests can take advantage of hairdryers, a drier and bath sheets supplied in the bathrooms.



the manager of Hotel Meridien in Kigali where he worked for six years.

In 2005, the plan to establish Dian Fossey Nyiramacibiri Hotel was hatched and started operations from a secured land with gardens where tents were erected and customers would hold events there.

Participants to such events would seek accommodations from a few hotels and lodges in Gisenyi town. Thus, the high demand for hotels services was Hamudara's only impetus to build a hotel that could provide comprehensive services to guests.

The 2-Star hotel started with five rooms and upgraded to 26 rooms, conference facilities with three halls that could host up to 200 guests, two restaurants, bar and reception.

The rooms at the hotel have

Today, this calm, safe and budget friendly facility has access to Rubavu City and neighborhoods while staying for leisure or business, Lake Kivu beach as well as the great attractions in Rubavu will give you nice experiences.

Guests can visit the Gisenyi Presbytery of the Presbyterian Church in Rwanda (EPR), situated 0.9 miles from the hotel. Monument Chukudu is 20-minute walk away from the hotel premises. In addition, a Mosque is located within a walking distance from the hotel. You, also, have a view and services of ULK Gisenyi Campus as it's part of the neighbourhood.

Dian Fossey Nyiramacibiri Hotel brings out the best of Rubavu with great traditional and international cuisine specialities that are majorly produced locally. Guests easily enjoy a serene environ, play area and wonderful art dotting the facility.



Dian Fossey Nyiramacibiri Hotel

Relax at
this quiet
location, feel
the tropical
sun and the
extremely
gentle Lake
Kivu breeze
cool

Rue de la Corniche,
Gisenyi, Rwanda

For more info call:

0788517591

dianfosseyhotel1@yahoo.com
twitter.com/DianFosseyHote1



Thirst for Financial Stability defines Etincelles FC



Most football clubs in Rwanda survive with difficulties paying wages or signing new players due to financial instability. Now, Rubavu district authorities blame poor performance of many football clubs on financial instabilities.

The bad situation in this sport is largely caused by lack of funding or sponsorship which put most clubs in a terrible situation, but this is likely to change with Etincelles FC.

In the 2023/24 season that began in August, Etincelles FC, a club founded by tea farmers in Pfunda and sponsored by fans and Rubavu district, has put in place strategies to remain financially sound.

Prior to the start of the season, the Rubavu-based side received a sponsorship budget package of Rwf 120 million (\$US 97,569) from the district. The district contributes 50% to the budget of the club representing Rubavu town.

The club intends to raise more funding through fundraising, seasonal tickets, sponsorship deals, donations,

The club intends to raise more funding through fundraising, seasonal tickets, sponsorship deals, donations, gate collections and the sale of club merchandise.

gate collections and the sale of club merchandise.

According to Mayor Deogratias Nzabonimpa of Rubavu district, most clubs in the country fail to perform well because players and coaches are not paid their wages on time.

To assist the club ensure that it remains expanding on its network of partners, district



authorities have revealed that they will assist the club to expand its next work partners first, to launch fundraising to raise funds from well-wishers.

In addition, the district affirmed that it will further assist the club in signing a partnership deal with Pfunda tea plantation where the club can promote tea company activities.

Etincelles FC will be able to see Pfunda tea products during games and training sessions.

Apart from the pursuit of excellence in the commercial realm as one of the local clubs with attractive sports brands, the Rubavu-based side can also realize exponential growth while fueling its dreams both on and off the pitch.

Despite finishing 7th last season, both management and the district note that fans also need to be educated about the culture and importance of supporting the club.

"Instead of just asking the club for results without donating anything, fans should ask "what can we do for the club? We need to organize a campaign to reach out to every fan." The district authority points out.

The authorities' regard club fans as important not only for boosting players' morale and confidence, but also for bringing in revenue.

In March this year, the club management introduced a new digital platform to allow

supporters to register and pay their membership fees.

The platform which is aimed at raising revenues and recording club fans in the country was signed with Esicia Ltd, a Rwandan-based company that specializes in software development and system integration.

"We are trying to reach out to every Etincelles fan countrywide and request them to register on this platform," Thabit Habineza,



club Executive Committee member said.

By categorizing its supporters, monitoring their contributions, and making contributions easy wherever they are, the club hopes to be able to better serve its fans.

As part of the club's plans, Rubavu will introduce a season-ticketing system, where supporters can buy tickets for the entire season online.

HIGHLIGHTS FOR ETINCELLES FC

Founded by tea farmers at Pfunda in 1962, Etincelles FC is one of the oldest football

The platform which is aimed at raising revenues and recording club fans in the country was signed with Esicia Ltd, a Rwandan-based company that specializes in software development and system integration.

... As part of the club's plans, Rubavu will introduce a season-ticketing system, where supporters can buy tickets for the entire season online.

clubs in Rwanda.

The last time the club topped the Rwanda league table was back in 2009 when they went on to finish 3rd but later

upgraded to second place after Atraco FC withdrew from the league.

The Rubavu-based club made a comeback to the African scene in nearly 12 years of absence in 1989, they featured in the CAF Cup Winners Cup, losing to Vital'O of Burundi 2-1 aggregate.

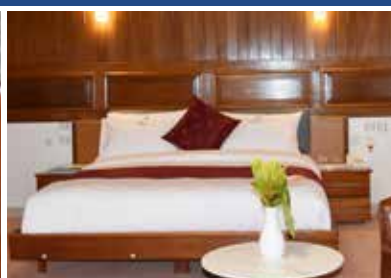
In 2011, the club was eliminated from the CAF Confederation Cup after drawing 1-1 all (3-1 on agg) with Congo Brazzaville's AC Leopards at Umuganda stadium in Rubavu.

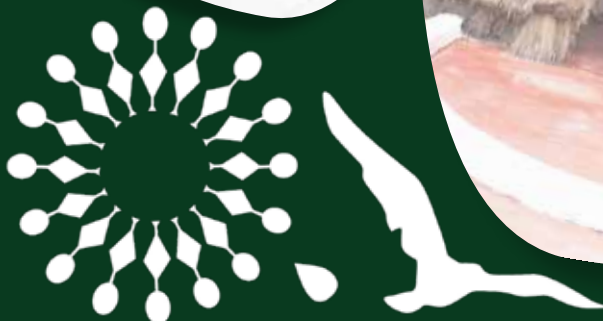


CREDO HOTEL

Kanyaru road, Huye,
Southern Rwanda |

Tel: +250 788 302 216



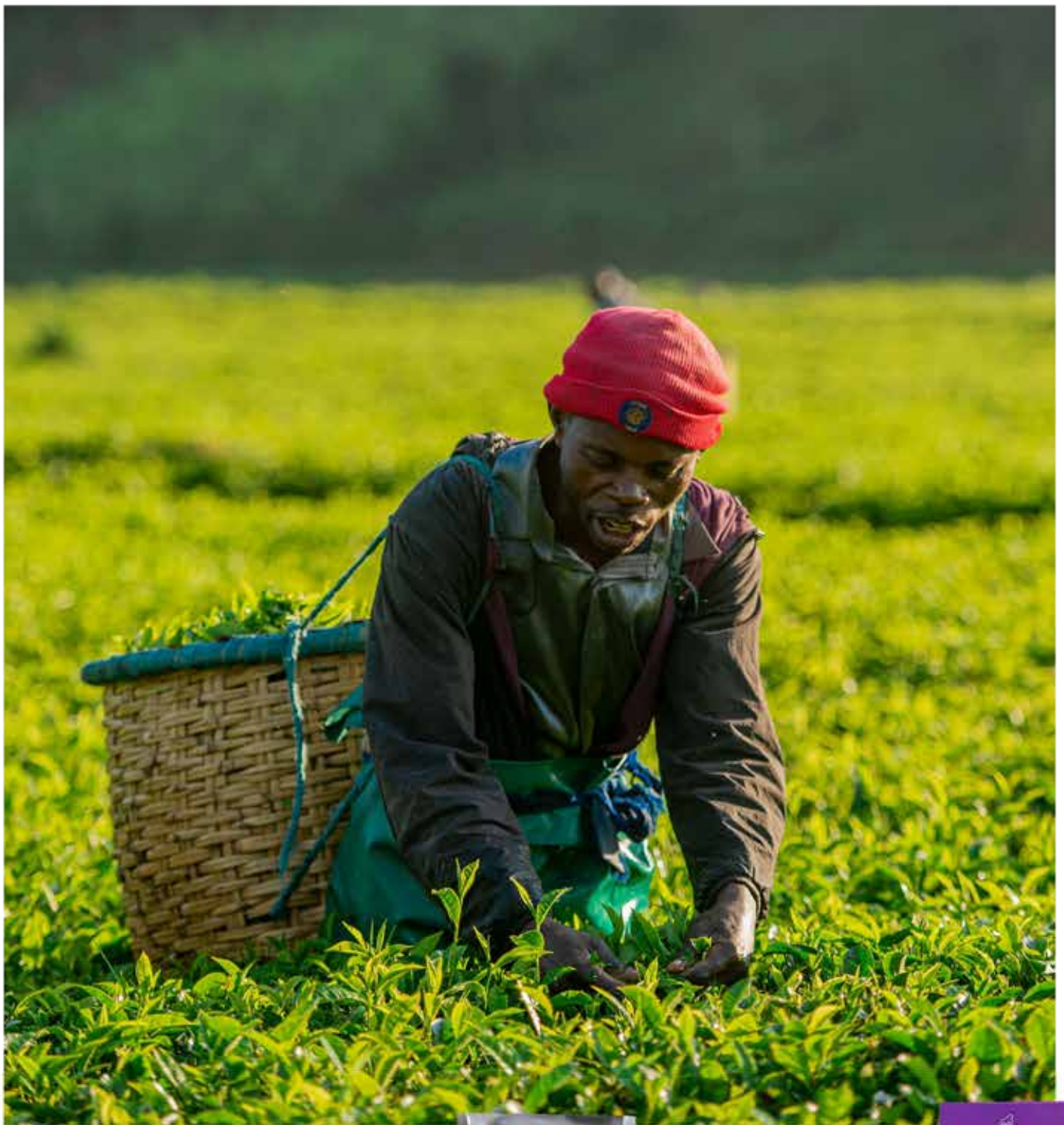


NIRVANA HEIGHTS RESORT & SPA

**Gisenyi, Rubavu
Rwanda | Near Biralirwa**



+250 788 306 585
nirvanaheightshotel@gmail.com



**Bright Teas From A Thousand Hills
People, Environment and Quality**



PFUNDA TEA COMPANY | RUGABANO TEA COMPANY | GISOVU TEA COMPANY